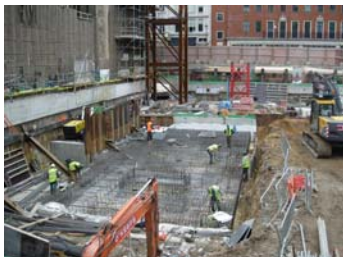
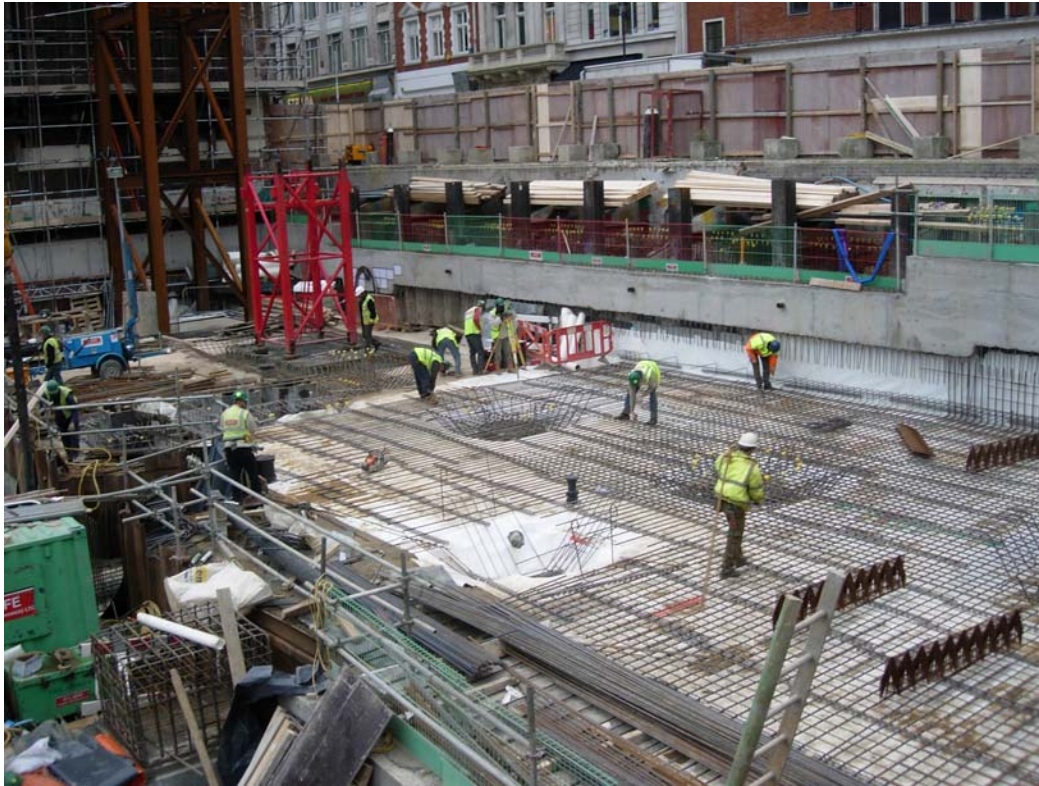


23 Savile Row

O'KEEFE
CONSTRUCTION (Greenwich) LTD



Market Sector	Commercial
Site	23 Savile Row, W1
Contractor	Mace
Engineer	Arup
Duration	50 Weeks
Value	£3.8m

Description

Awarded in two phases this project required O'Keeffe to undertake the installation of rotary bored secant piled wall to the perimeter of the site through the existing basement & lower basement slabs through an opening formed by drilling and bursting methods. Design and installation of temporary works to retain the perimeter structures and roads via plunge column steel sunk into the male piles and stub columns fixed to perimeter wallings. Construction of a capping beam, followed by bulk excavation of basement to new levels. Construction of substructure foundations and cast iron drainage installation. Steel frame (by others). Concrete to metal deck.

O'Keeffe Construction (Greenwich) Ltd

St Andrews House 1 Dreadnought Street Greenwich London SE10 0PU
Tel: 0208 858 9124 Fax: 0208 858 0806 www.okeefe.co.uk

Project Ref: C669